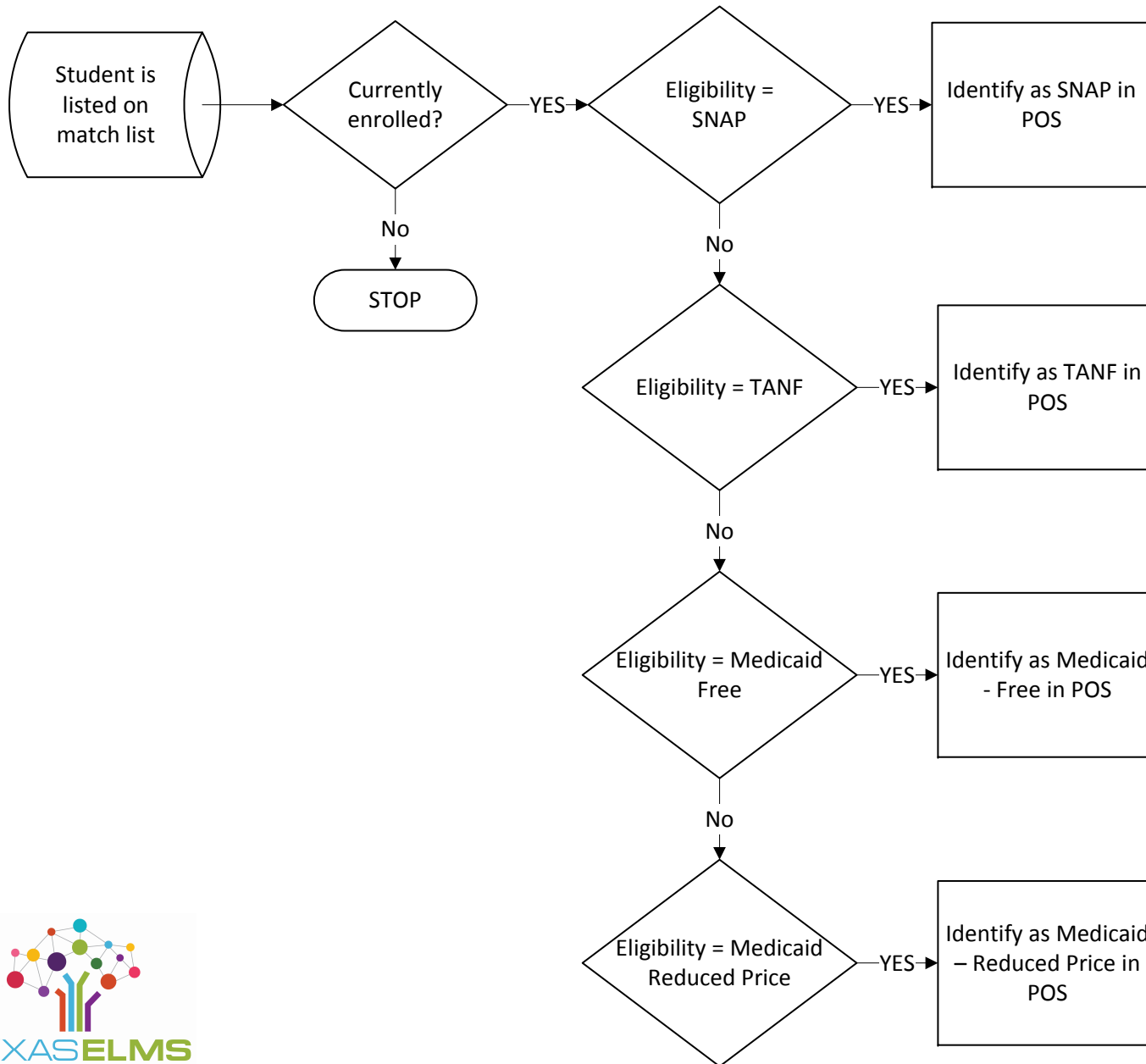


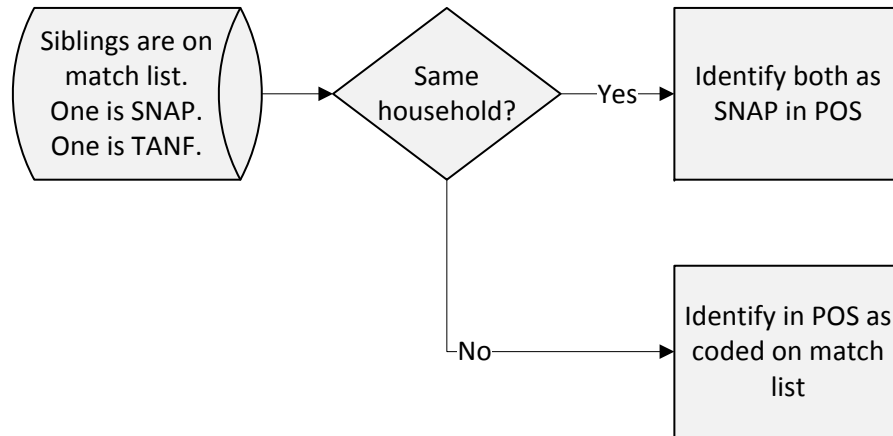
Texas ELMS Decision Paths

2017-2018

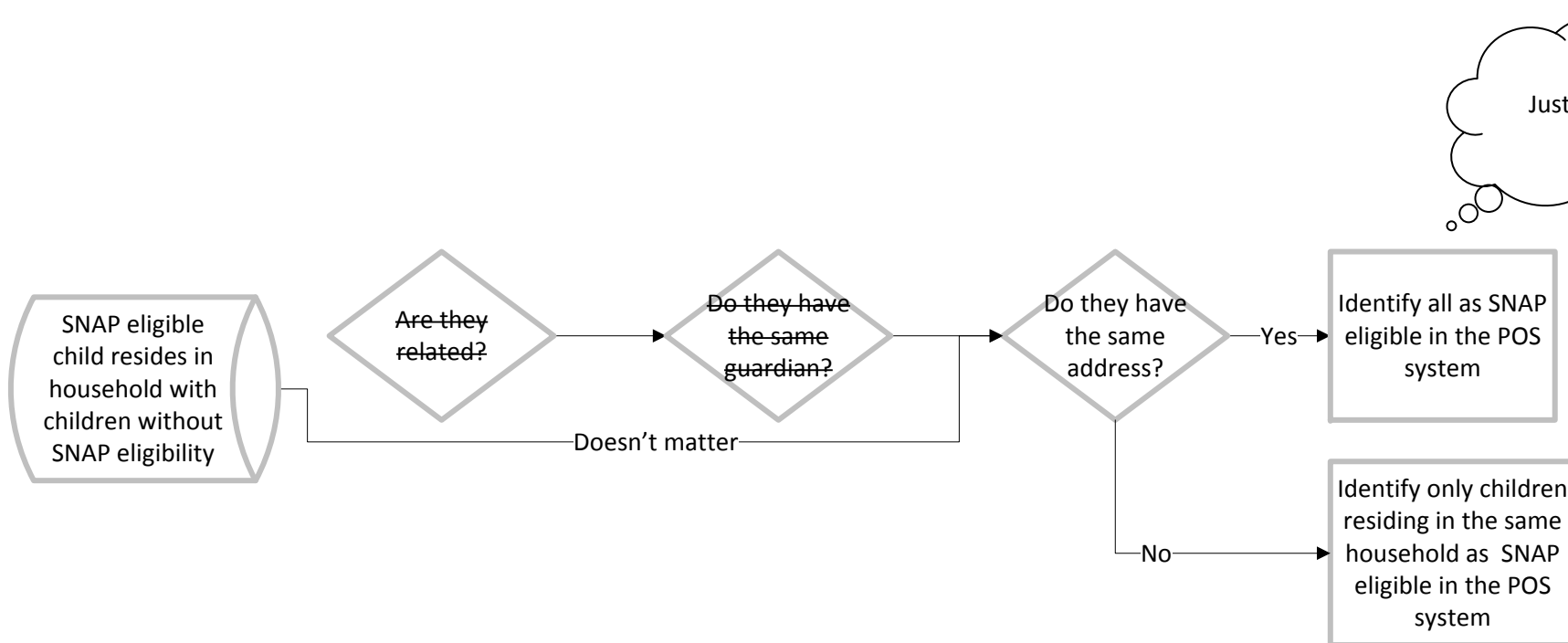


Texas ELMS Decision Paths

2017-2018

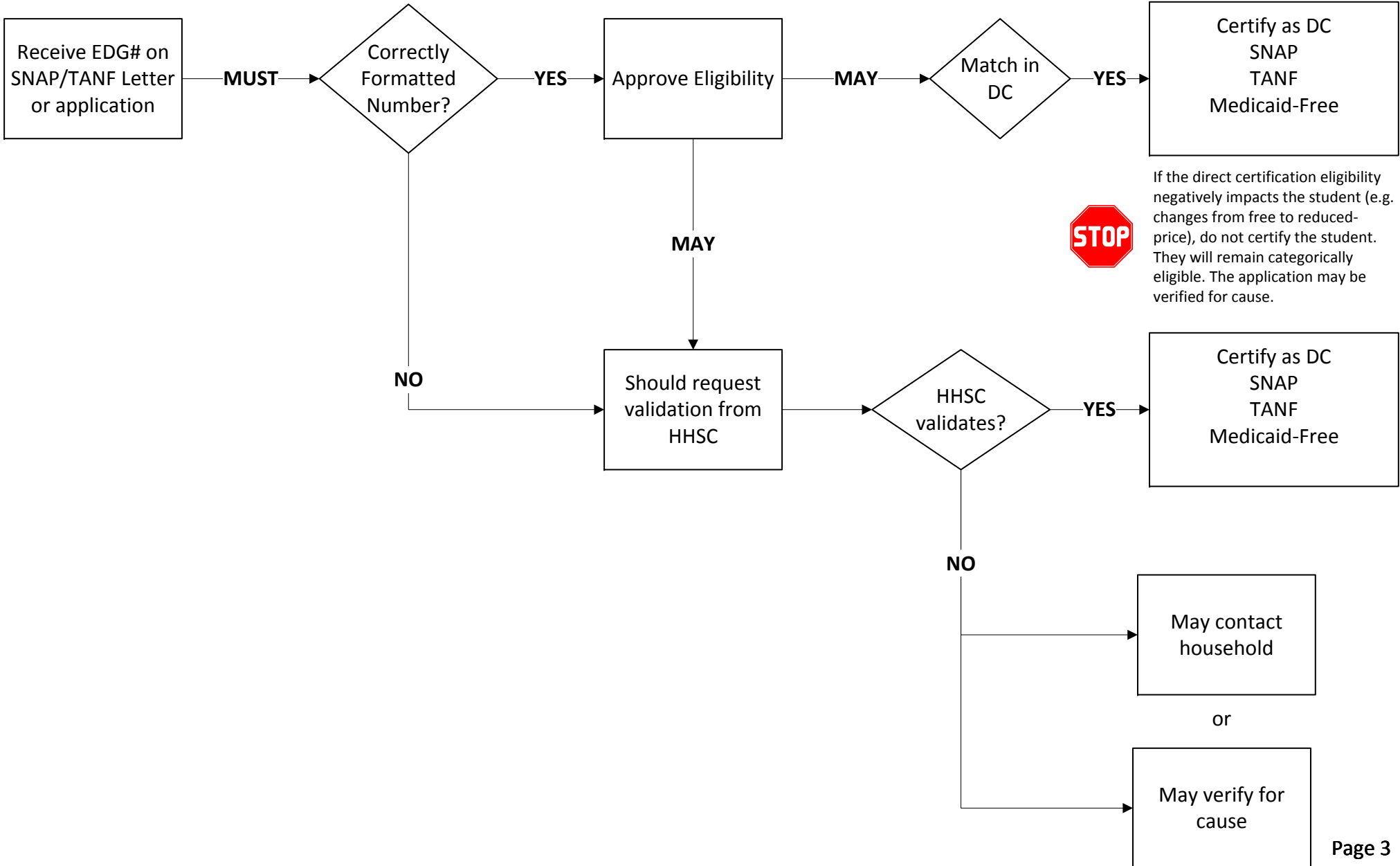


This applies to Medicaid Free and Medicaid Reduced Price, as well. If a SNAP eligible child is in the household, all children are SNAP eligible.



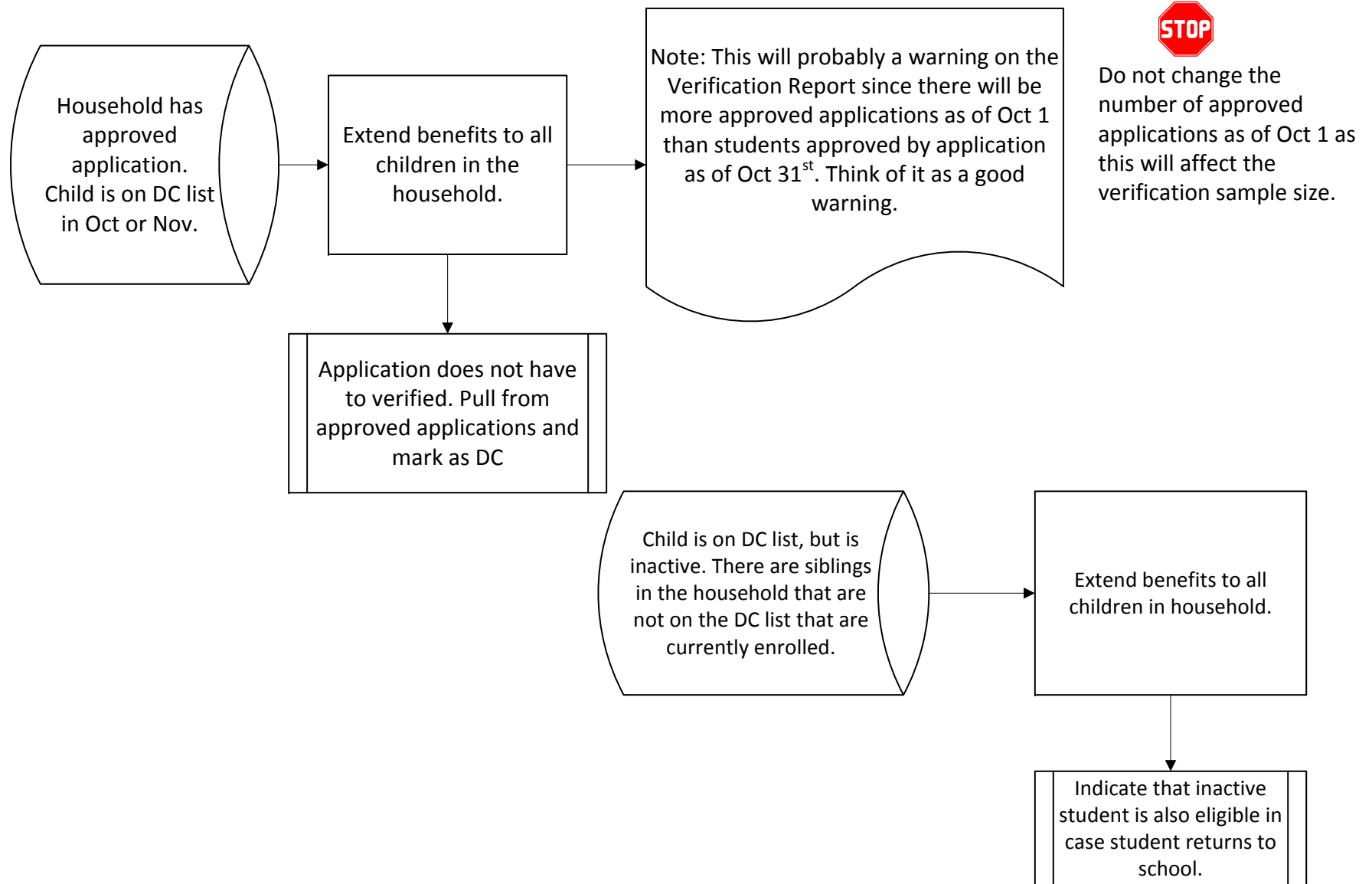
Texas ELMS Decision Paths

2017-2018



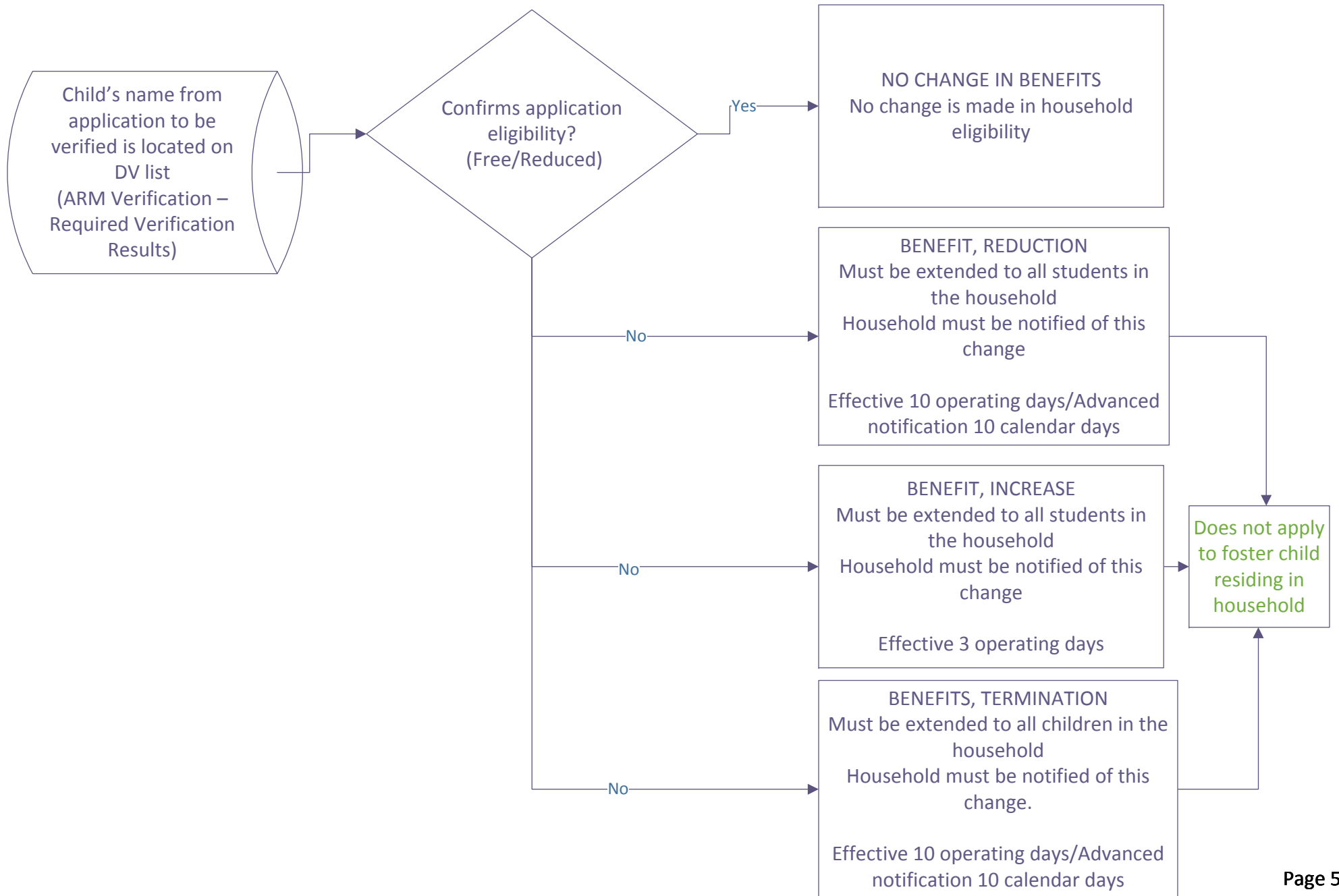
Texas ELMS Decision Paths

2017-2018



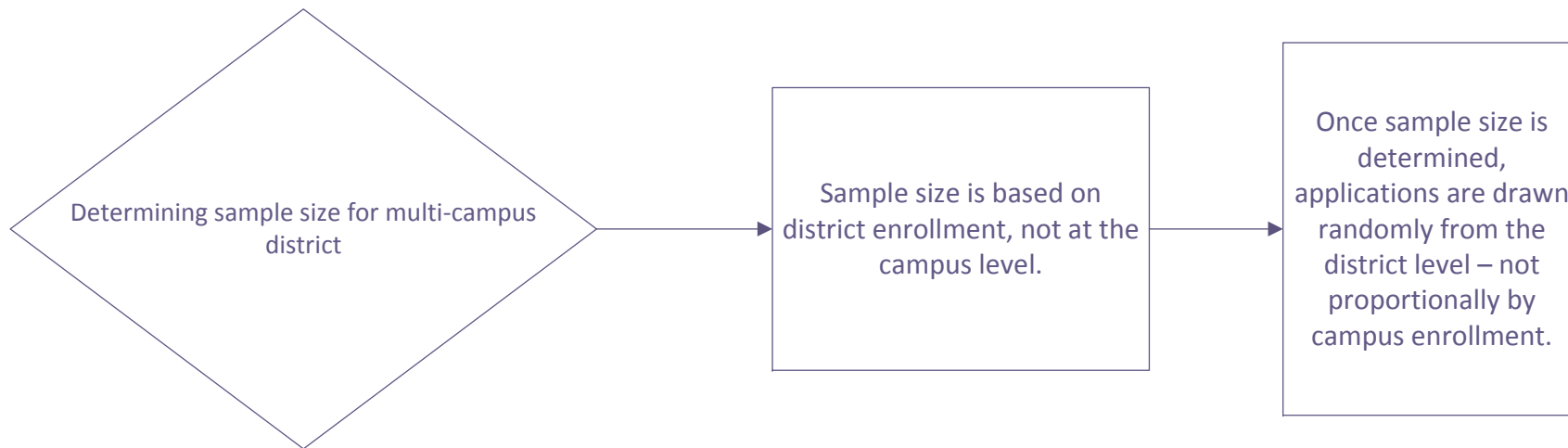
Texas ELMS Decision Paths

2017-2018



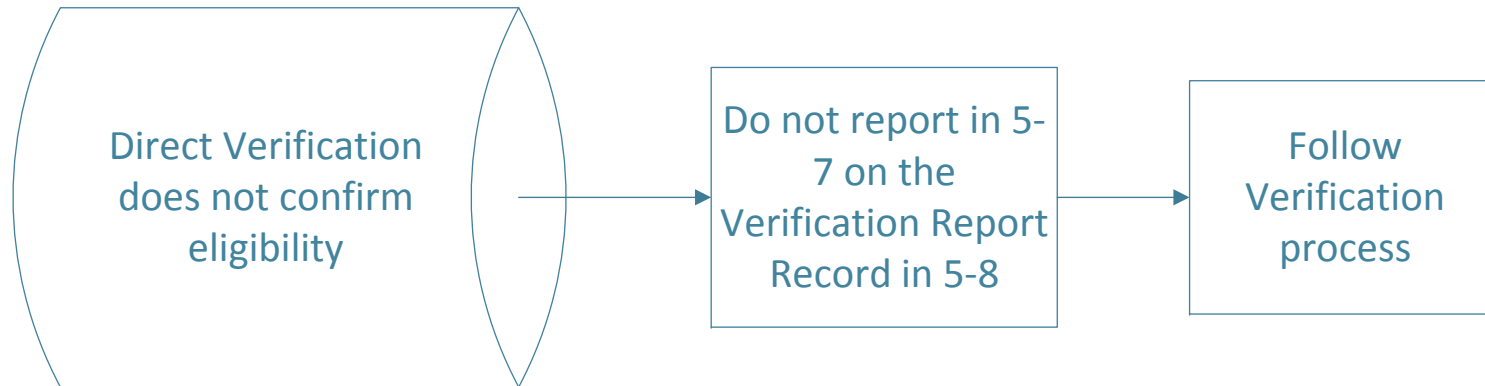
Texas ELMS Decision Paths

2017-2018



Texas ELM Decision Paths

2017-2018



The Direct Verification process does not confirm the application status.

- Application shows eligibility as free, but DV shows eligibility is reduced.
- Application shows eligibility as reduced, but DV shows eligibility is free.

When reporting this on the Verification Report, do not include the application in the count on 5-7 "Confirmed through Direct Verification" because the eligibility was not confirmed.

Report in 5-8 Results of Verification by Original Benefit Type